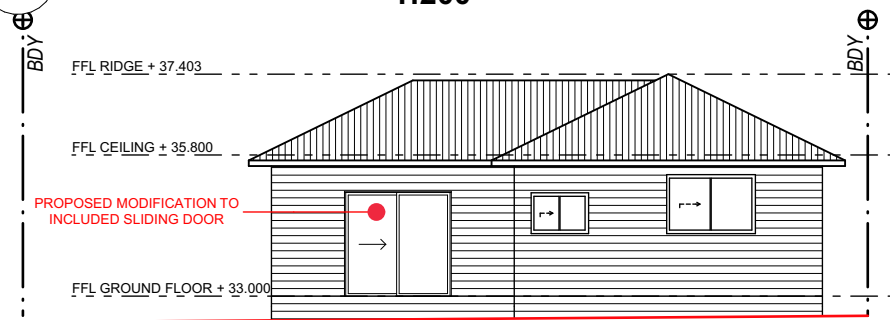
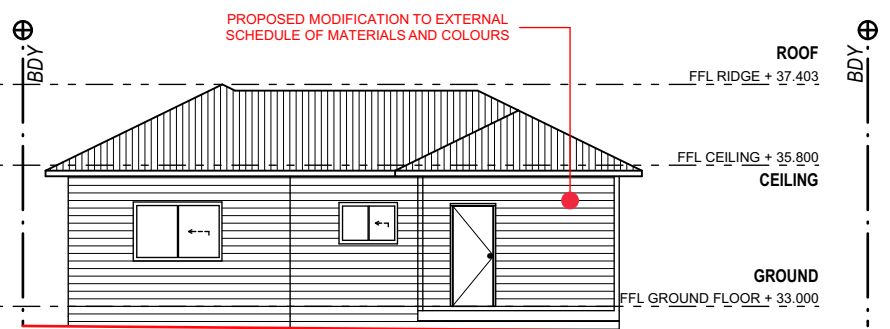


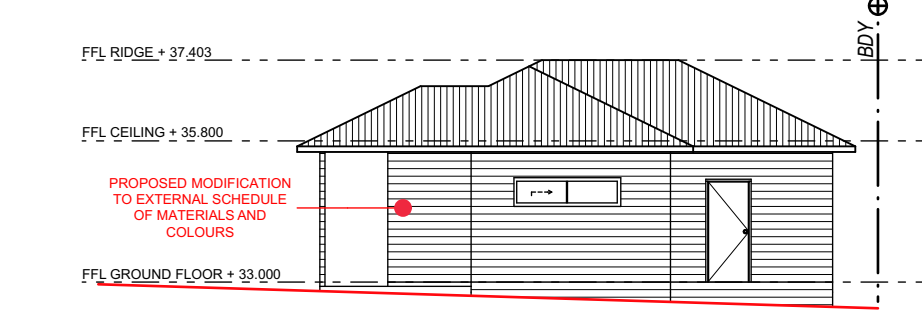
01 Site / Roof Plan  
1:200



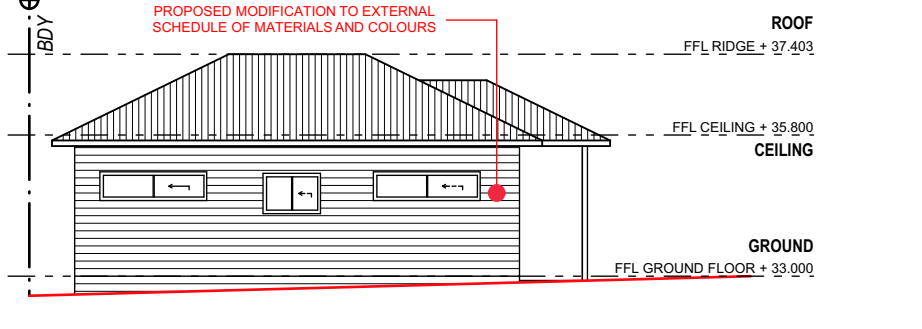
02 1 North Elevation  
1:150



04 South Elevation  
1:150



03 East Elevation  
1:150



05 West Elevation  
1:150

ISSUE FOR APPROVAL

ISSUE	DESCRIPTION	DATE
A	ISSUE FOR APPROVAL	12/04/23
B	ISSUE FOR APPROVAL	08/05/23
C	ISSUE FOR APPROVAL	06/06/23

NOTES

The plans, drawings and specifications incorporated in this document shall remain the copyright © of DESIGN LINK AUSTRALIA PTY LTD and must not be used, reproduced or copied wholly or in part without prior written consent of DESIGN LINK AUSTRALIA PTY LTD.

Figured dimensions shall take preference over scaling.

Verify all dimensions on site.



DESIGN LINK AUSTRALIA PTY LTD

• Suite 1, L5, 410 Church Street, Parramatta NSW 2150  
• PO BOX 3085 North Strathfield NSW 2137  
• 02 9744 3116 • info@design-link.com.au

Nom. Architect Andre Mousso NSW Registered Architect 11743  
NSW Design Practitioner - Architectural DEP2705

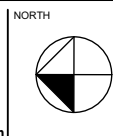


DRAWING TITLE

NOTIFICATION PLAN

DRAWING NO

MOD 04



SECTION 4.55 MODIFICATION

Proposed Secondary Dwelling

23 Telopea Street, Punchbowl

JOB NO.	DATE	DRAWN	CHECKED	SCALE
23018_MOD	6/06/2023	P.G	A.M	As Shown on A1